

KAYLA RENEE

PAPER CRAFTER

Winterly Tree Tops - Accordion Gate Fold Card

www.kaylarenee.com



Supply List

all supplies can be purchased in my online store find at www.kaylarenee.com

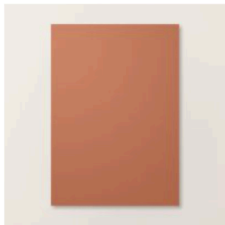
Coming Soon: 5th September

Nests of Winter Suite
164072 \$171.50

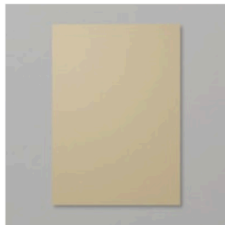
Winterly Tree Tops Bundle
164066 \$98.00



Products Available Now



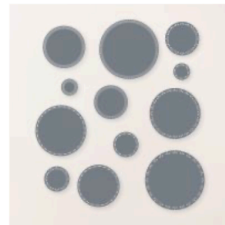
Copper Clay A4 Cardstock
[161730]



Crumb Cake A4 Card Stock
[121685]



Basic White A4 Thick Cardstock
[159230]



Spotlight On Nature Dies
[163580]



Clear Wink Of Stella Glitter Brush
[141897]



Copper Clay Stampin' Blends Combo Pack
[161662]



Copper Clay Classic Stampin' Pad
[161647]



Jet Black StazOn Ink Pad
[101406]



Blending Brushes
[153611]



Multipurpose Liquid Glue
[110755]

Kayla Renee

A Friend Like You

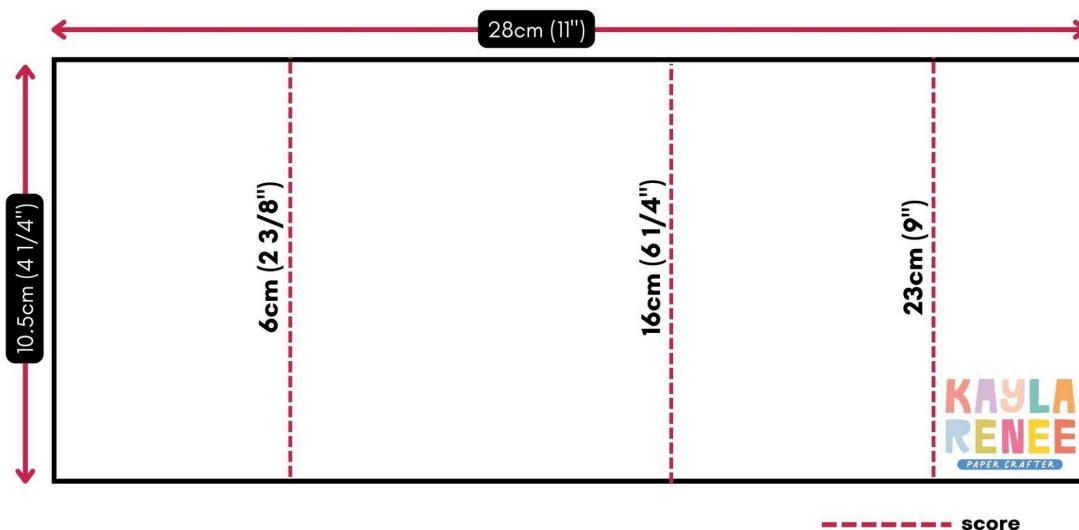


Measurements

Paper	No of Pieces	Metric Measurement	Imperial Measurement
Copper Clay Card Base	1	10.5cm x 28cm Score at 6cm, 16cm & 23cm	4 1/4" x 11" Score at 2 3/8", 6 1/4" & 9"
Nests of Winter Paper for Front Side of Accordion Folds	1 1 1	4.8cm x 10.3cm 5.8cm x 10.3cm 6.8cm x 10.3cm	1 7/8" x 4 1/8" 2 1/4" x 4 1/8" 2 5/8" x 4 1/8"
Nests of Winter Paper for Inside of Accordion Folds	1 1	5.8cm x 10.3cm 6.8cm x 10.3cm	2 1/4" x 4 1/8" 2 5/8" x 4 1/8"
Crumb Cake for Centre Panel	1	9.8cm x 10.3cm	3 3/4" x 4 1/8"
Basic White for Centre Panel	1	9.6cm x 10.3cm	3 5/8" x 4"
Copper Clay for Card Back	1	9.8cm x 10.3cm	3 3/4" x 4 1/8"
Scraps of Copper Clay, Crumb Cake and Vellum		For stamping & die cutting	For stamping & die cutting

Instructions

1. Score the card base as stated in the measurement guide. Use the template below to see the measurements and score guide.



2. Cut all the layers of the Nests of Winter Designer Series Paper to the sizes listed. Attach each layer designed for the front sides of the accordion fold on the front facing sides of the card. Repeat for the inside pieces - the largest panel is for the Crumb Cake and Basic White layers.
3. Take the layer of Basic White and add some Copper Clay ink lightly blended in the bottom right corner with a Blending Brush. Spritz some Copper Clay marker over this piece and some Wink of Stella. Fussy cut out a bird from the Nests of Winter Designer Paper and decorate this panel. Adhere to the layer of Crumb Cake and adhere to the centre panel.
4. Take two lengths of 60cm (23 inches) Copper Clay Linen Thread and wrap around the card in the middle. Tie a bow to the right hand side of the front of the card. Adhere the Copper Clay Cardstock layer for the back with adhesive to the back of the card to help hold this twine in place.
5. Die cut the second smallest Spotlight on Nature circle dies with the pattern shown in Copper Clay Cardstock. Use a Blending Brush and some Copper Clay ink to darken the edges. Add a bit of Tear N' Tape over the Linen Thread on the left hand side panel of the card front. Adhere this circle over the top with Stampin' Dimensionals.
6. Die cut out some birds, greenery and pinecones from the Nests of Winter Designer Paper. Die cut out some greenery pieces from the coordinating dies with Vellum or similar. Use a light Copper Clay Stampin' Blend to add colour to these pieces and go over the top with Wink of Stella.
7. Adhere the birds with some Stampin' Dimensionals to the circle die cut. Tuck in some of the greenery, pinecones and vellum greenery around the birds with Liquid Adhesive or similar adhesive.

- Stamp the sentiment in StazOn ink on some Crumb Cake Cardstock and trim apart. Adhere the first part of the greeting where shown. Chop apart the second part of the greeting as shown and adhere to the inside of the card.
- Embellish the card with some of the Earth Tones Shimmer Gems and spritz the card with Wink of Stella. Add some Wink of Stella to the fussy cut birds if desired.

Please note: This card also works as a standard sized card. Use these measurements. Metric: 28cm x 14.9cm for metric scored at 6cm, 16cm and 23cm Imperial: 5 ½" x 11" scored at 2 ¾", 6 ¼" and 9". Doing a full size card will require a full A4 or letter sized sheet. Adjust layers accordingly by height.



VIDEO TUTORIAL

<https://youtu.be/pTetlRTqnPU>