

KAYLA RENEE

PAPER CRAFTER

Full of Life - Mountain Fun Fold Card

www.kaylarenee.com



Supply List

all supplies can be purchased in my online store find at www.kaylarenee.com



**Friends For Life Bundle
(English)
[I63365]
\$93.50**



**Full Of Life 6" X 6" (15.2 X
15.2 Cm) Designer Series
Paper
[I63357]
\$21.75**



**Iridescent Faceted Gems
[I63368]
\$15.00**



**Berry Burst, Old Olive &
White 12" X 12" (30.5 X 30.5
Cm) Glimmer Specialty
Paper
[I63769]
\$10.50**



**Adhesive Backed Shiny
Sequins
[I63484]
\$13.25**



**Clear Wink Of Stella
Glitter Brush
[I41897]
\$15.75**



**Foam Adhesive Sheets
[I52815]
\$14.50**



**Small Blending Brushes
[I60518]
\$25.00**



**Melon Mambo Classic
Stampin' Pad
[I47051]
\$15.75**



**Pumpkin Pie Classic
Stampin' Pad
[I47086]
\$15.75**



**Blueberry Bushel Classic
Stampin' Pad
[I47138]
\$15.75**



**Balmy Blue Classic
Stampin' Pad
[I47105]
\$15.75**



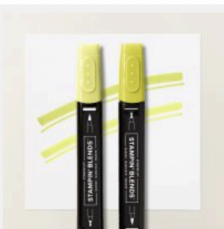
**Granny Apple Green
Stampin' Pad
[I47095]
\$15.75**



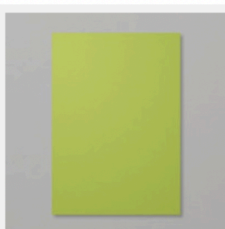
**Daffodil Delight Classic
Stampin' Pad
[I47094]
\$15.75**



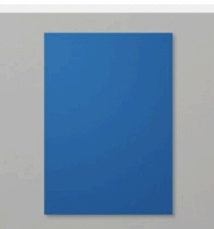
**Melon Mambo Stampin'
Blends Combo Pack
[I53112]
\$19.25**



**Lemon Lime Twist
Stampin' Blends Combo
Pack
[I61682]
\$19.25**



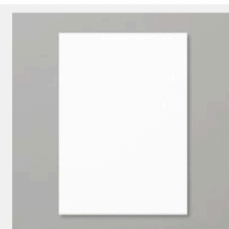
**Granny Apple Green A4
Cardstock
[I47014]
\$20.25**



**Blueberry Bushel A4
Cardstock
[I46991]
\$20.25**



**Daffodil Delight A4 Card
Stock
[I21680]
\$20.25**



**Basic White A4 Thick
Cardstock
[I59230]
\$19.75**

Kayla Renee

Best Friend



Measurements

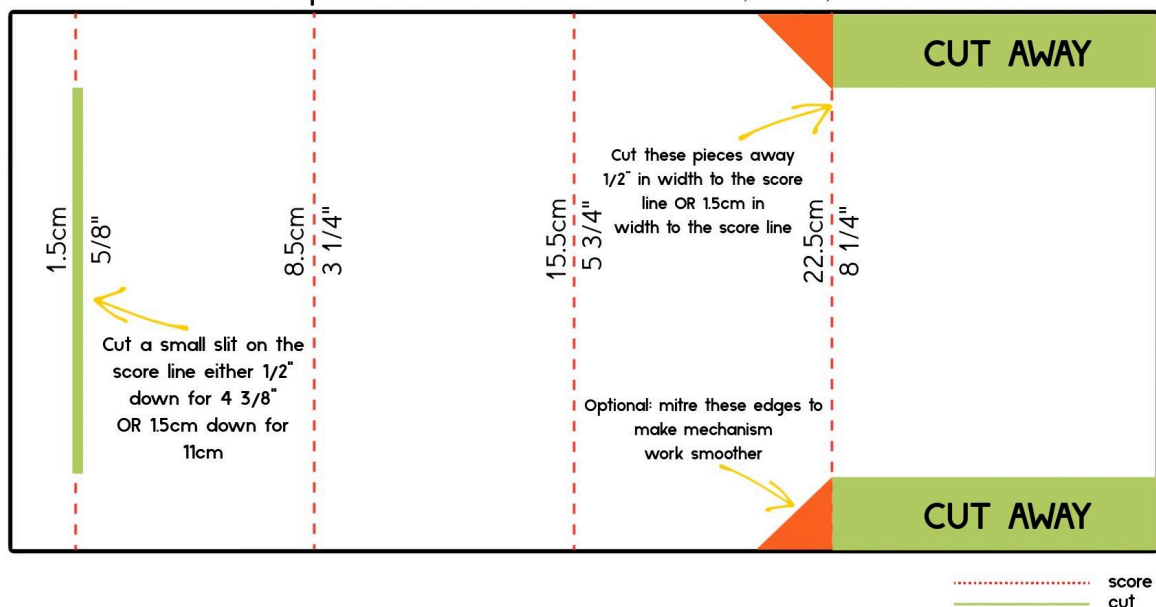
Paper	No of Pieces	Metric Measurement	Imperial Measurement
Card Base	1	14cm x 29cm score at 14.5cm	5 ½" x 11" score at 5 ½"
Mountain Mechanisms	2	30.5cm x 14cm Score at 1.5cm, 8.5cm, 15.5cm and 22.5cm	11 ¾" x 5 ½" Score at ⅝", 3 ¼", 5 ¾", 8 ¼"
Band to Secure	1	1cm x 30.5cm	½" x 12"
Front & Back Cardstock Layers	2	13.8cm x 14.3cm	5 ⅜" x 5 ⅝"
Front/Back DSP Layers	2	13.6cm x 14.1cm	5 ¼" x 5"
Mechanism Paper Layers	4	6.8cm x 13.8cm	2 ⅜" x 5 ⅜"
Centre Designer Series Paper	2	6.8cm x 13.8cm	2 ⅜" x 5 ⅜"
Pull Out Side Panel DSP	2	7.8cm x 10.8cm	4 ⅜" x 2 ⅞"
Small Pull Out Glimmer Strip	2	1cm x 10.8cm	½" x 4 ⅜"
Centre Writing Panel White	1	7cm x 10cm	4" x 2 ¾"
Centre Writing Panel Cardstock	1	7.2cm x 10.2cm	4 ⅛" x 2 ⅞"

Instructions

1. Prep the card base folding in half across the long side. Cut TWO mountain mechanism pieces. Using the template below score at the respective measurements in your preferred measurement (either metric or imperial) Please note: for metric you will need 12x12" cardstock whereas for imperial you can use your standard sheet of cardstock. Once you have made your scores along the long side cut a slit on the 1.5cm or $\frac{5}{8}$ " score line using the template as a guide. To make this fold work a little bit better I have slightly moved it after cutting the slit to give me a slightly larger slit - see video. Cut away the sections marked in green and mitre the edges where shown. Burnish all these score lines.

mechanism metric: 30.5cm x 14cm - score at 1.5cm, 8.5cm, 15.5cm and 22.5cm

mechanism imperial: 11 $\frac{3}{8}$ " x 5 $\frac{1}{2}$ " - score at $\frac{5}{8}$ ", 3 $\frac{1}{4}$ ", 5 $\frac{3}{4}$ " and 8 $\frac{1}{4}$ "



2. Once you have these two mechanisms prepped, take one of them and line the small scored edge with the edge of the left hand side of the card base adhering it with strong adhesive so the flap is adhered with the fold out mechanism folded towards the centre of the card. Once this is adhered, fold the mechanism back towards the outside of the card, placing the end through the slit so that it forms a triangle fold. Use some removable tape (or a post it note) to hold this triangle in place. Take one of the bands to secure this fold and wrap it around the base of the triangle closest to the middle of the card, adhering the strips around the back of the card with liquid glue ensuring that they are as straight as possible. Repeat this step again with other mechanism on the right side of card.
3. Take the two front and back cardstock layers with the front and back Designer Series Paper layers. Adhere these together and then adhere to the front and back of the card.

4. On the inside add the mechanism paper layers to each of the 'triangles'.
5. Fold out the mechanism and take the Designer Series Paper for the centrefold and adhere this to either side of the middle fold. I have used a pattern that I wanted to carry through each side so I have taken my piece of paper and cut it to the height I needed and then cut the first left hand side piece before cutting the second piece for the right hand side. This allowed it to look like it was one piece - see photos.
6. Adhere both side panel pieces with the mechanism pulled out, then push the mechanism back shut and adhere the small (glimmer paper) strips for the pull out piece on the panel to both the front and back of the card.
7. Take the writing centre panel coloured cardstock and Basic White piece and on the Basic White piece add some light blending (I have used Daffodil Delight and Melon Mambo) in the far right corner. I have used the leaf stamp with Melon Mambo Ink to add some interest. Adhere these two layers together and then cut this whole piece in half. For metric this is cut at 5.1cm and for imperial it is cut at 2 1/16". Adhere these pieces to the centre on both the left and right hand side of the middle fold so that they look like one piece - see video or picture below. ***Optional: I have added a small strip of Designer Series Paper and Glimmer Paper to the Basic White piece before layering it on the cardstock.***
8. Add some Adhesive Foam Sheet to some Basic White Cardstock and then die cut out the heart dies (layered together) from the Friends For Life Dies. Stick the die cut pieces to a silicone mat or Glass Mat so that the centre fill in pieces stick to the mat, peeling away the larger hearts. Use a Blending Brush and some ink (I have used Melon Mambo, Daffodil Delight and Pumpkin Pie) to colour an ombre style look on these pieces. Adhere the two large white hearts to the centre of the card and then use your Take Your Pick tool to add the coloured die cut pieces back into the heart.
9. Add some Foam Adhesive Sheet to a piece of Daffodil Delight Cardstock and die cut out the word 'friend' Place this on the card where shown.
10. Stamp the word 'Best' using a mixture of Balmy Blue and Blueberry Bushel ink. I have used an ombre technique by dipping the stamp half way back in the Blueberry Bushel ink and using a small Blending Brush to lightly blend them in the middle before stamping. Fussy cut these letters out and adhere them to the card where shown.
11. Decorate the card front with some die cut hearts from some Berry Burst Glimmer Paper and then add some sequins and Iridescent Faceted Gems. Spritz some Wink of Stella over the card front.
12. To decorate the inside triangle pieces, die cut two of the large leaf shapes from Designer Series Paper and Daffodil Delight Cardstock. Before adhering these stamp and die cut two of the leaf shapes in Granny Apple Green and colour these with Lemon Lime Twist Stampin' Blends. Adhere these shapes all together on the far right panel as shown.

13. Stamp the words 'Love You' in Blueberry Bushel Ink on some Basic White. Trim this down and adhere on the far right panel and then embellish the triangle panels with some die cut Berry Burt hearts and some of the sequins. Optional: I have also spritzed these panels lightly with some Melon Mambo Stampin' Blends.



VIDEO TUTORIAL CLICK BELOW

📺 Mountain Fun Fold 🌈 using Stampin' Up! Full of Life